

Interested in

- Using laboratory diagnostics to support patient care
- Supporting health protection
- Advising on rare and serious infections
- Supporting management/treatment of people after immunosuppression (e.g. transplant recipients)
- Interfacing between hospital policy and patient care
- Keeping antibiotics working for the future
- Protecting vulnerable patients from hospital-acquired infection ?



About us

- Diagnostic and consulting specialty
- Present in every acute hospital in UK
- Work with off-site laboratories, at on-site NHS laboratories, or with/at public health (/UKHSA) laboratories – regional and national reference centres
- Work alongside clinical scientists, biomedical scientists and support workers
- Covers bacteriology, usually mycology and parasitology, and often virology
- Other subspecialist areas include bone infection and paediatric infection



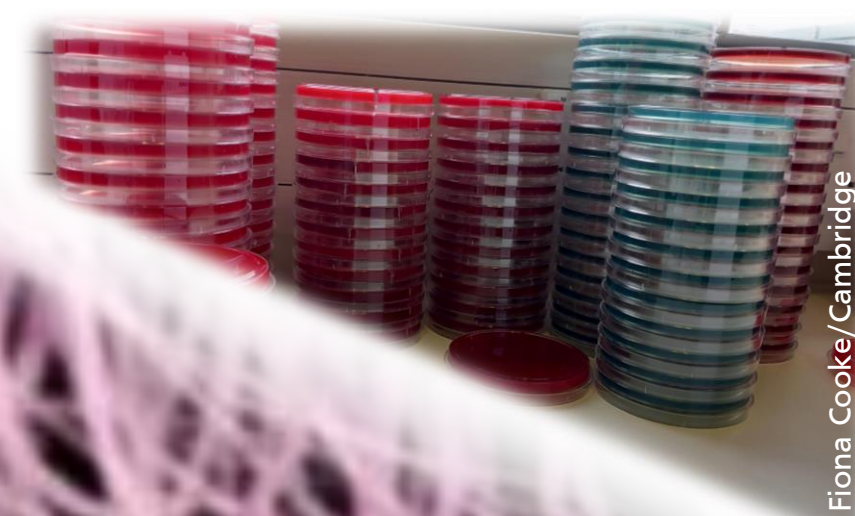
Can be taken singly, or dual with

- Infectious Diseases

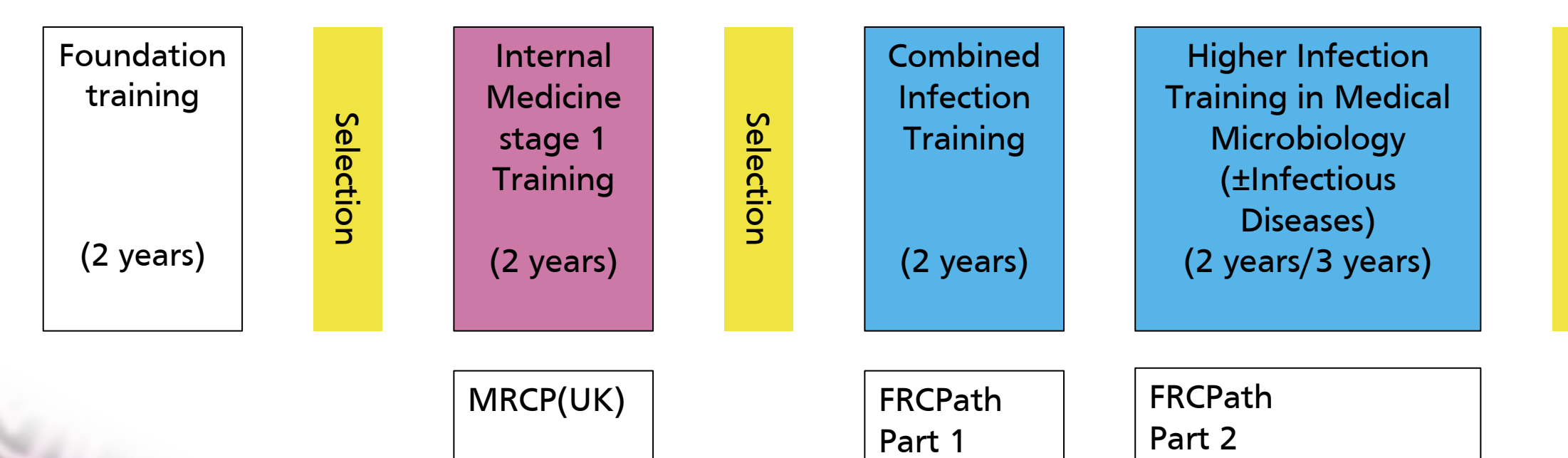


Medical Microbiology

(for medical entrants trained in UK)



Typical non-academic training pathway



Taking academic time during training is common



How to get in

- Via Internal Medicine Training (need MRCP)
- Successful applicants have often developed interests/expertise
- Make use of taster weeks!

More information

(...do talk to us!)
www.rcpath.org – Royal College of Pathologists



www.britishinfection.org – British Infection Association

